

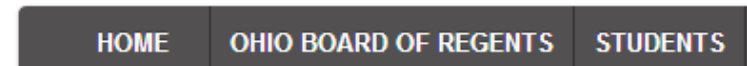
College Degree Attainment Outcomes for Early College Students in Ohio: 2004-2011



Topics

- Marion Technical College
- Data Sources
- Results of Study
- Future

Ohio's Education System



- 612 Public School Districts
- 780 Public High Schools
- High school enrollment ~600,000

- 14 Universities
- 24 Regional Branch Campuses
- 23 Community Colleges
- 120 Adult Workforce Centers
- Fall 2013 UG enrollment 510,907

Marion Technical College's Early College Programs

- On campus and off campus
- Increase in credits of 31% in past 5 years
- Located at 17 different high schools
- Dedicated faculty to manage high school sites
- Combination of full-time, part-time, and qualified high school faculty teach at off-campus sites



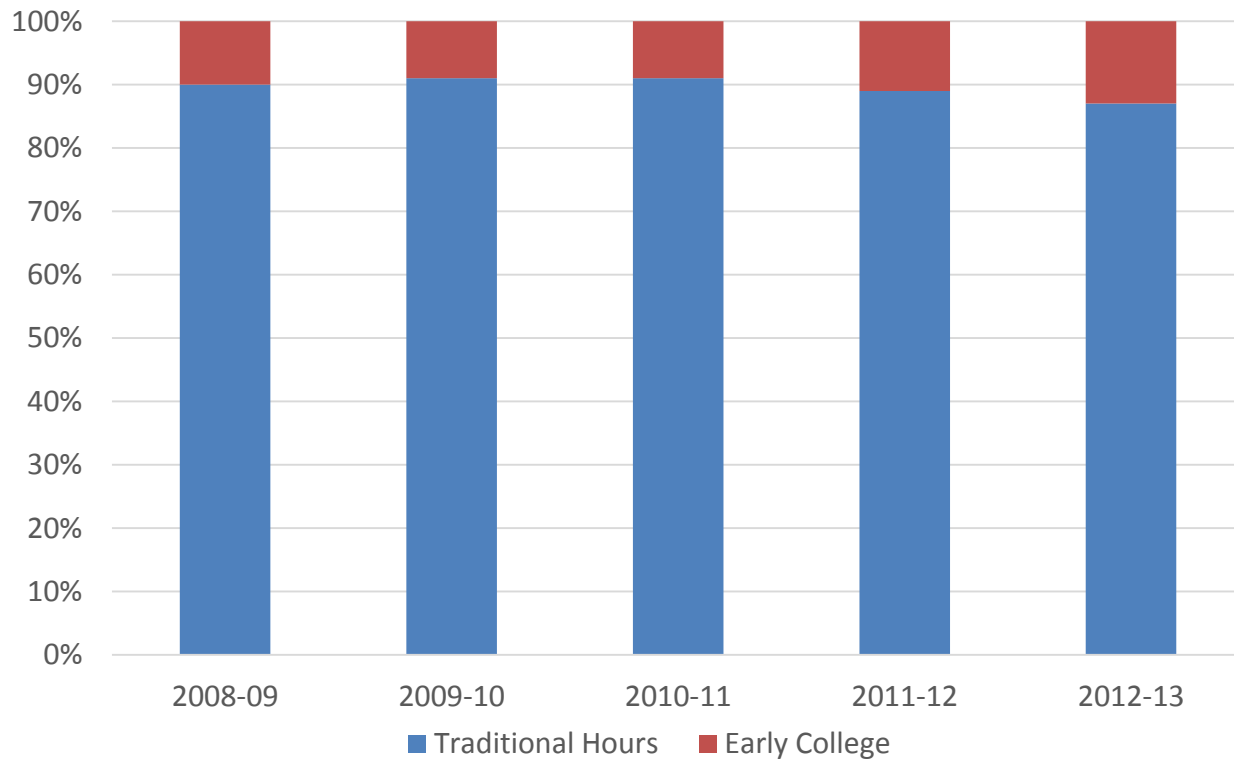
Marion
Technical
College



High School

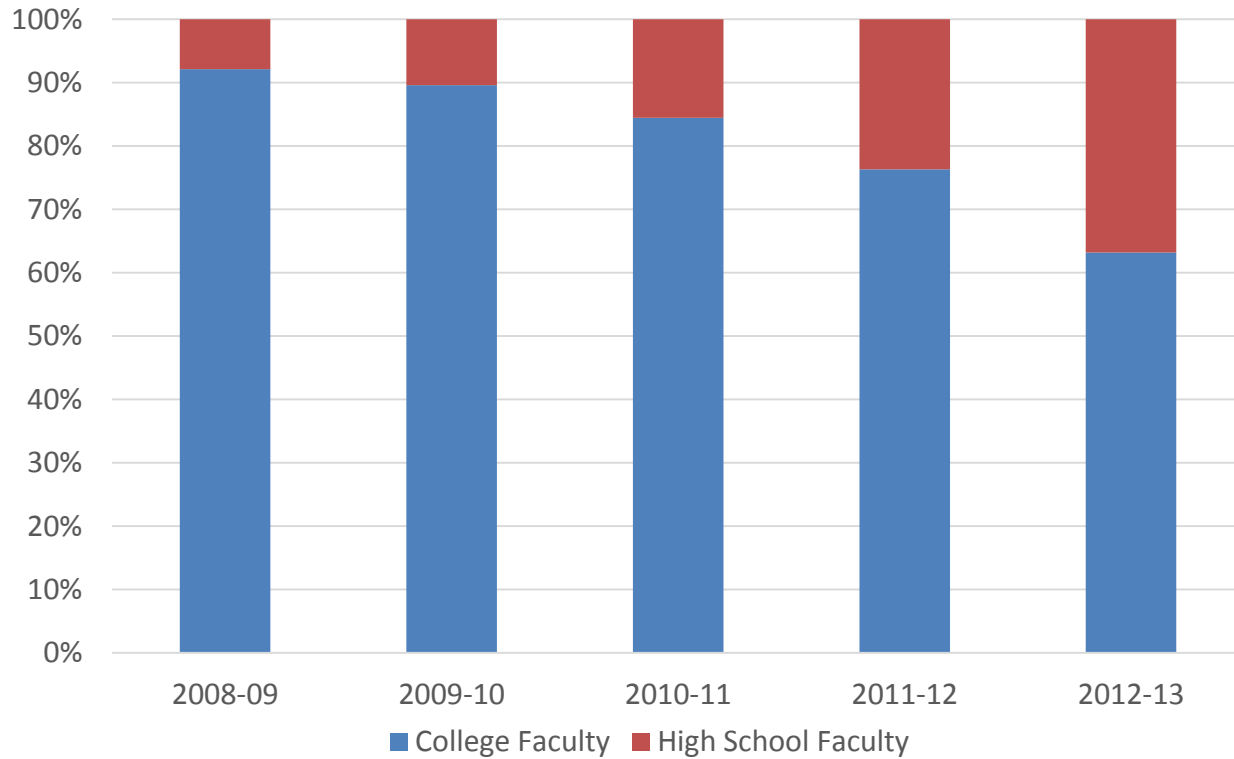
Marion Technical College

Growth in Early College Hours as Percentage of Total Credit Hours



Marion Technical College

Faculty Teaching Early College Students



Ohio's Early College Programs

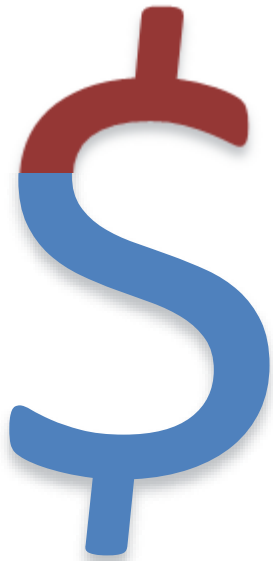
- High school students take college courses, earn college credit before graduating high school
- Delivery methods for native credit
 - High school students take courses at the college
 - College professors teach college courses at the high school location
 - Qualified high school teachers teach college course at the high school (Concurrent Enrollment; known in Ohio as Dual Enrollment)

Ohio's Early College Programs

Articulated Credits

- Advanced Placement (AP)
 - Student takes AP course, scores a minimum score of 3 on the AP test
- Career Technical Credit Transfer or (CT)²
 - Career technical students in defined pathways earn college credit; statewide guaranteed credit
- Local Articulation Agreements
 - Local credit transfer between a high school and a college

Ohio's Early College Programs



College
Tuition

**K-12 State
Funding**

Funding is deducted from K-12 schools and paid to college based on the proportional time a high school student spends taking college courses
(native credits)

Ohio's Early College Programs

General Research Question

Are Ohio's Early College Programs a Cost-Effective Way to Improve Degree Attainment?

Ohio's Higher Education Information System (HEI)

- Enrollment
- Employment
- Transfer
- Tuition and financial aid
- Graduation and retention
- Unrestricted queries

<https://www.ohiohighered.org/data-reports>

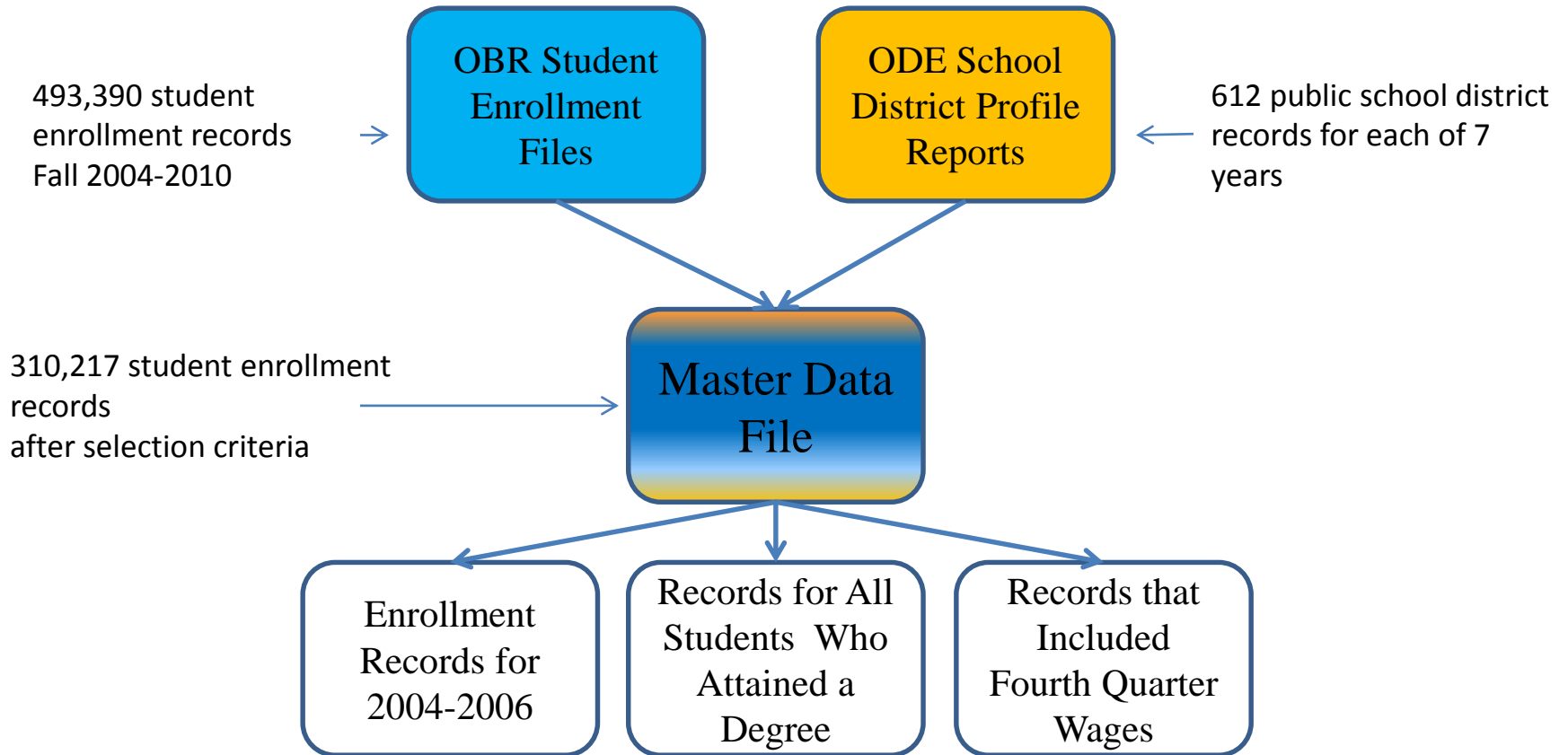
Ohio K-12 District Profile Reports

- Available for each school district and provides data values for over 50 variables and also includes two columns of comparison data values – one for similar districts and one for the state.
- Information includes demographic data, personnel data, property valuation and tax data, local tax effort data, expenditure data, revenue by source data, and school district financial status data.

<http://education.ohio.gov/Topics/Finance-and-Funding/Finance-Related-Data/District-Profile-Reports>

Merging the Datasets

A retrospective analysis of recent high school graduates who enrolled in college



Early College Study

- Ohio college students who entered in Fall Terms 2004-2010
- Tracked through Spring Term 2011
- Recent high school graduate
- Public high school; public college

Earned college credit
in High School

Did not earn college
credit in High School

General Results

Degree Attainment Rates Through Spring 2011						
Fall term entered	Non-Early College		Early College		% Difference	
	N	% Earned degree	N	% Earned degree		
2004	40,766	54.7	2,469	72.2	17.5	
2005	39,386	52.4	2,699	70.8	18.3	
2006	40,140	45.1	2,786	63.3	18.2	
Total	120,292	50.7	7,954	68.6	17.9	

Students starting in fall term 2004, 2005, or 2006; degree attainment through spring 2011

Degree Attainment

	No Early College Credit		Earned Early College Credit		% Difference
	N	% Earned degree	N	% Earned degree	
All Students	120,292	50.7	7,954	68.6	17.9
Not Pell eligible	89,304	56.3	6,185	73.1	16.8
Pell eligible	30,988	34.5	1,737	52.8	18.3
First term full-time	115,293	52.3	7,785	69.2	16.9
First term part-time	4,999	12.5	169	40.8	28.3
Income Quintile 1 (Lowest)	19,803	35.6	1,411	58.3	22.7
Income Quintile 2	14,075	44.5	1,279	66.5	22.0
Income Quintile 3	27,636	54.8	1,612	68.4	13.6
Income Quintile 4	19,186	48.6	1,426	71.6	23.0
Income Quintile 5	39,592	58.8	1,426	74.5	15.7
First term at 4 year	98,567	56.3	7,479	70.2	13.9
First term at 2 year	21,725	25.5	475	43.4	17.9

Students starting in fall term 2004, 2005, or 2006; degree attainment through spring 2011

Credits to Bachelor Degree

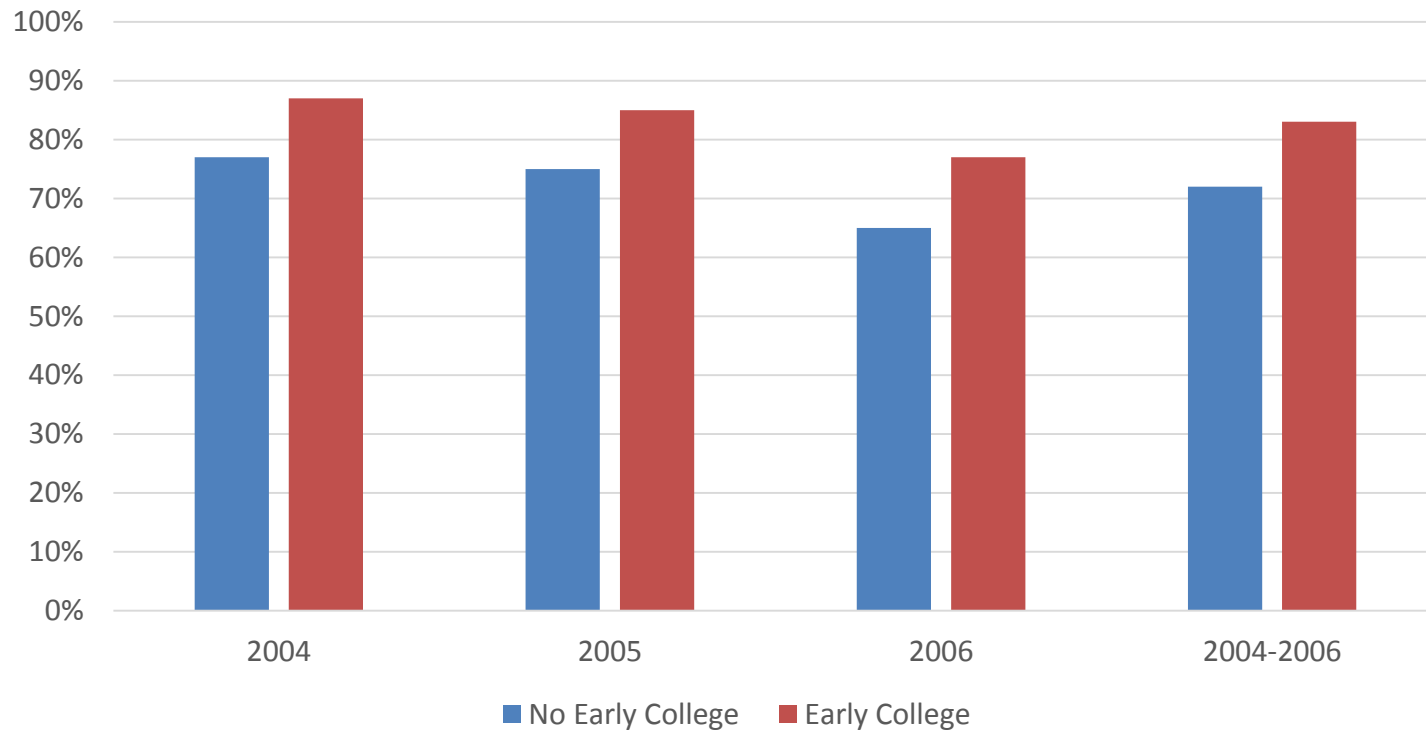
Mean Credits to Bachelor Degree Based on Number of Early College Credits Earned

Early college credits earned	N	Not including early college credits		Including early college credits	
		Mean (SD)	Difference from no early college	Mean (SD)	Difference from no early college
0	60,035	134.4 (16.1)	-	134.4 (16.1)	-
.1-5	1,549	133.8 (17.6)	-0.6	136.3 (17.6)	+1.9
5.1-10	1,760	129.5 (17.6)	-4.9	136.9 (17.6)	+2.5
10.1-15	1,110	127.0 (17.3)	-7.4	139.8 (17.3)	+5.4
15.1-20	641	122.4 (17.7)	-12.0	140.1 (17.6)	+5.7
20.1-25	421	117.2 (17.3)	-17.2	140.0 (17.3)	+5.6
25.1-30	332	115.8 (18.3)	-18.6	143.3 (18.2)	+8.9
30.1 +	366	101.6 (20.7)	-32.8	148.5 (19.9)	+14.1
All Early College	6,179	126.2 (19.6)	-8.2	138.8 (18.0)	+4.4

Students starting in fall term 2004-2010; degree attainment through spring 2011

Economic Benefit-State Subsidy

State-Funded Credits Resulting in Degree Attainment



Future

- Create a single student identifier for pre-K – 20
- Design data systems to facilitate analysis
- Differentiate the types of early college credit
- Change early college funding mechanism to encourage participation

Questions?

Thanks for attending!

Copies of study available on request

Bob Haas

Marion Technical College

740-389-4636 x361

haasr@mtc.edu