



CROSSING THE FINISH LINE

Laramie County School District #2 and Laramie County Community College

Introductions

Darla Golding

- Counselor, Pine Bluffs HS

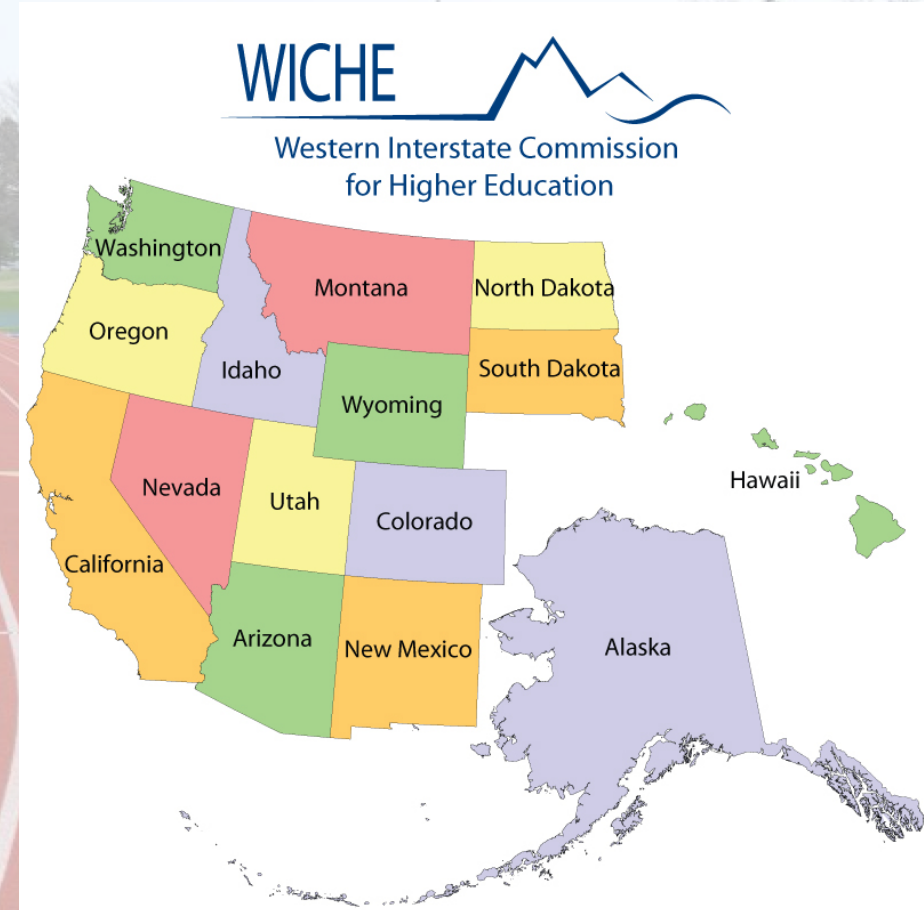
Rakhshi Hamid

- High School Programs Director, LCCC
- Masters degree in Counseling Psychology Counselor Education
- Marriage and Family therapy and Substance Abuse Counselor
- GEAR UP and Concurrent Enrollment

RELAYS (Interstate Passport)

- Nationwide Network
 - Colleges
 - Universities
- Transfer of lower-division general education classes
- Multi-state faculty developed learning outcomes and proficiency criteria

<http://interstatepassport.wiche.edu/>



LONG JUMP



General Education Classes

- College Algebra
- English Composition I
- Introductory Chemistry
- History
- Psychology
- Theatre
- English Literature

Guided Pathways

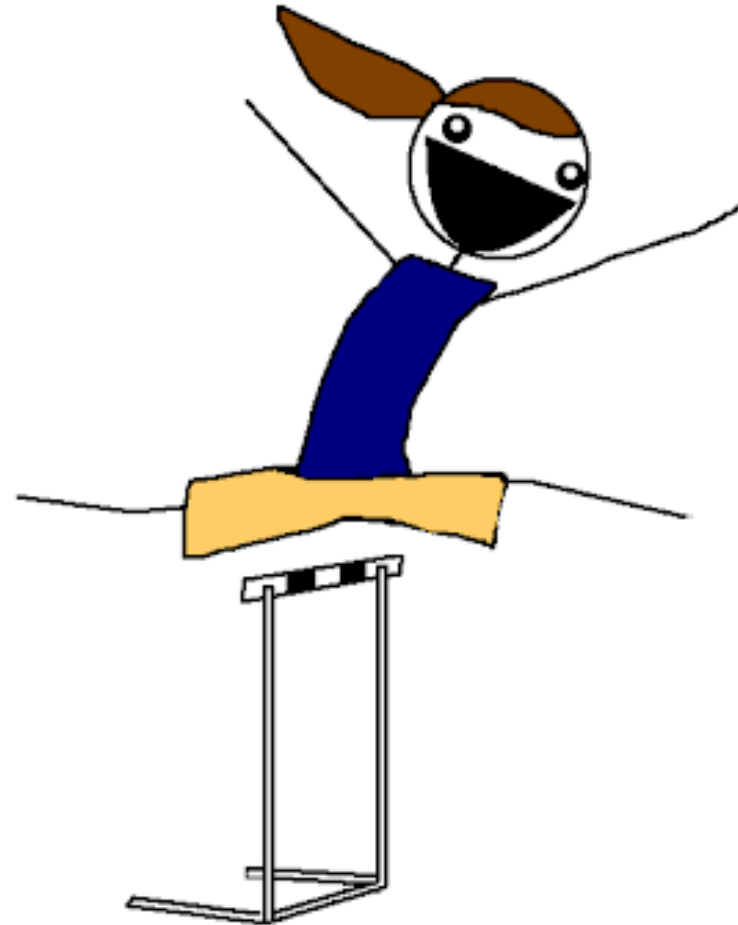
- Auto
- Welding
- Agriculture

Pine Bluffs Interstate Passport Plan

| Semester | Dual or Concurrent | Course | Prerequisite | Passport Category |
|---|--|--|---|---|
| FA - Sophomore Year *** | Dual - Online | ART 1010 | 3.0 GPA or 18+ ACT Reading or 85+ McCann Reading Score | Creative Expression |
| SP - Sophomore Year *** | Dual - Online | BIOL 1003 OR ASTR 1050 OR 1050 | 3.0 GPA or 18+ ACT Reading or 85+ McCann Reading Score OR 3.0 GPA or 18+ ACT Reading or 85+ McCann Reading Score AND 22+ ACT Math or 46+ ALEKS Score OR 3.0 GPA or 18+ ACT Reading or 85+ McCann Reading Score | Life Science |
| FA - Junior Year | Concurrent | ENGL 1010 | 3.0 GPA or 18+ ACT Reading or 85+ McCann Reading Score | Written Communication |
| FA - Junior Year | Concurrent | MATH 1400 | 3.0 GPA or 22+ ACT Math or 46+ ALEKS Score | Quantitative Literacy |
| FA - Junior Year | Dual - ELC OR Dual - Online OR Dual - Online OR Dual - Online OR Dual - Online OR Dual - Online OR Dual - Online | HIST 1251 OR HIST 1211 OR HIST 1221 OR ANTH 1200 OR ECON 1010 OR ECON 1200 OR OR | 3.0 GPA or 18+ ACT Reading or 85+ McCann Reading Score OR 3.0 GPA or 18+ ACT Reading or 85+ McCann Reading Score OR 3.0 GPA or 18+ ACT Reading or 85+ McCann Reading Score OR None OR Completion of ENGL 1010 AND 3.0 GPA or 22+ ACT Math or 46+ ALEKS Score OR 3.0 GPA or 22+ ACT Math or 46+ ALEKS Score OR GPA or 18+ ACT Reading or 85+ McCann Reading Score OR OR | Human Society & the Individual 3.0 |
| SP - Junior Year | Concurrent | ENGL 2020 | Completion of ENGL 1010 | . |
| SP - Junior Year | Concurrent | THEA 1000 | 3.0 GPA or 18+ ACT Reading or 85+ McCann Reading Score | Teamwork |
| SP - Junior Year | Dual - Online OR Dual - Online OR Dual - Online | GEOG 1010 OR ECON 1010 OR 1010 | 3.0 GPA or 18+ ACT Reading or 85+ McCann Reading Score OR Completion of ENGL 1010 AND 3.0 GPA or 22+ ACT Math or 46+ ALEKS Score OR 3.0 GPA or 18+ ACT Reading or 85+ McCann Reading Score | Critical Thinking |
| SP - Junior Year | 2nd Dual - Onli | CHEM 1000 | 3.0 GPA or 22+ ACT Math or 46+ ALEKS Score | Physical Science |
| FA - Senior Year | Dual - ELC | PSYC 1000 | Completion or Concurrent Enrollment in ENGL 1010 | Human Cultures |
| SP - Senior Year | Dual - ELC | CQM 2010 | Completion or Concurrent Enrollment in ENGL 1010 | Oral Communication |
| To be offered at ELC during the PBHS regular school day and scheduled during Elective or Free Periods. | | | | |
| * Not currently needed for Interstate Passport but considered Gen Ed AE for LCCC - Modify after Passport Updated with new classes | | | | |
| ** Can be taken Online or on Cheyenne Campus. I believe they are in the credentialing process for new hire for 19/20 so possible concurrent in future years | | | | |
| *** Advanced Sophomores that have Administrative approval and meet Prerequisites | | | | |

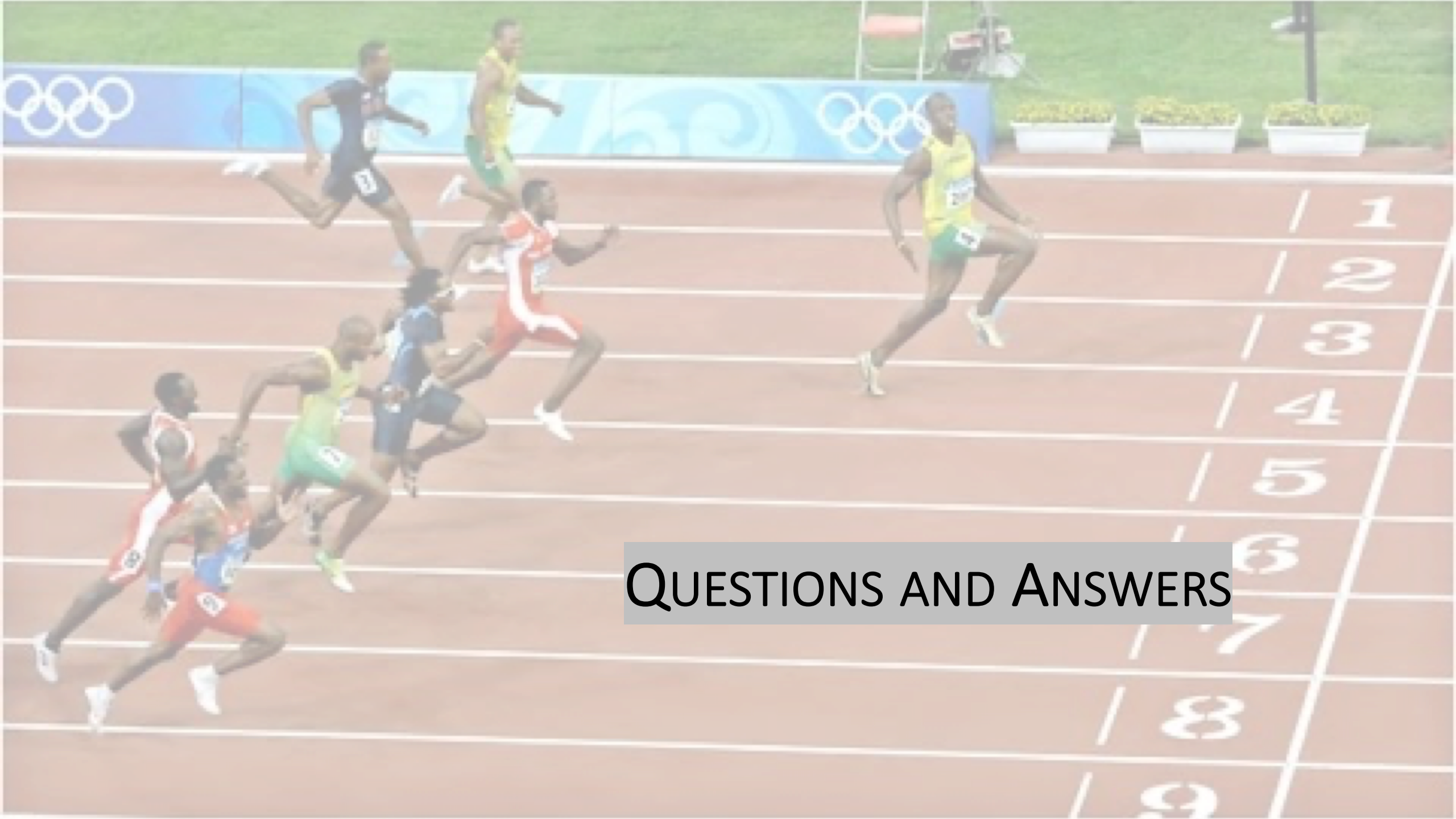
HURDLES

- Credentialing Instructors
- Curriculum Alignment
- Funding
- Equal Access



[This Photo](#) by Unknown Author is licensed under [CC BY-NC-ND](#)





QUESTIONS AND ANSWERS