



IDAHOPTech
network

ALAN MILLAR, Executive Director
alan@idahoptech.org

STEPHANIE CHILDRESS, Academic Programs Manager
stephanie@idahoptech.org



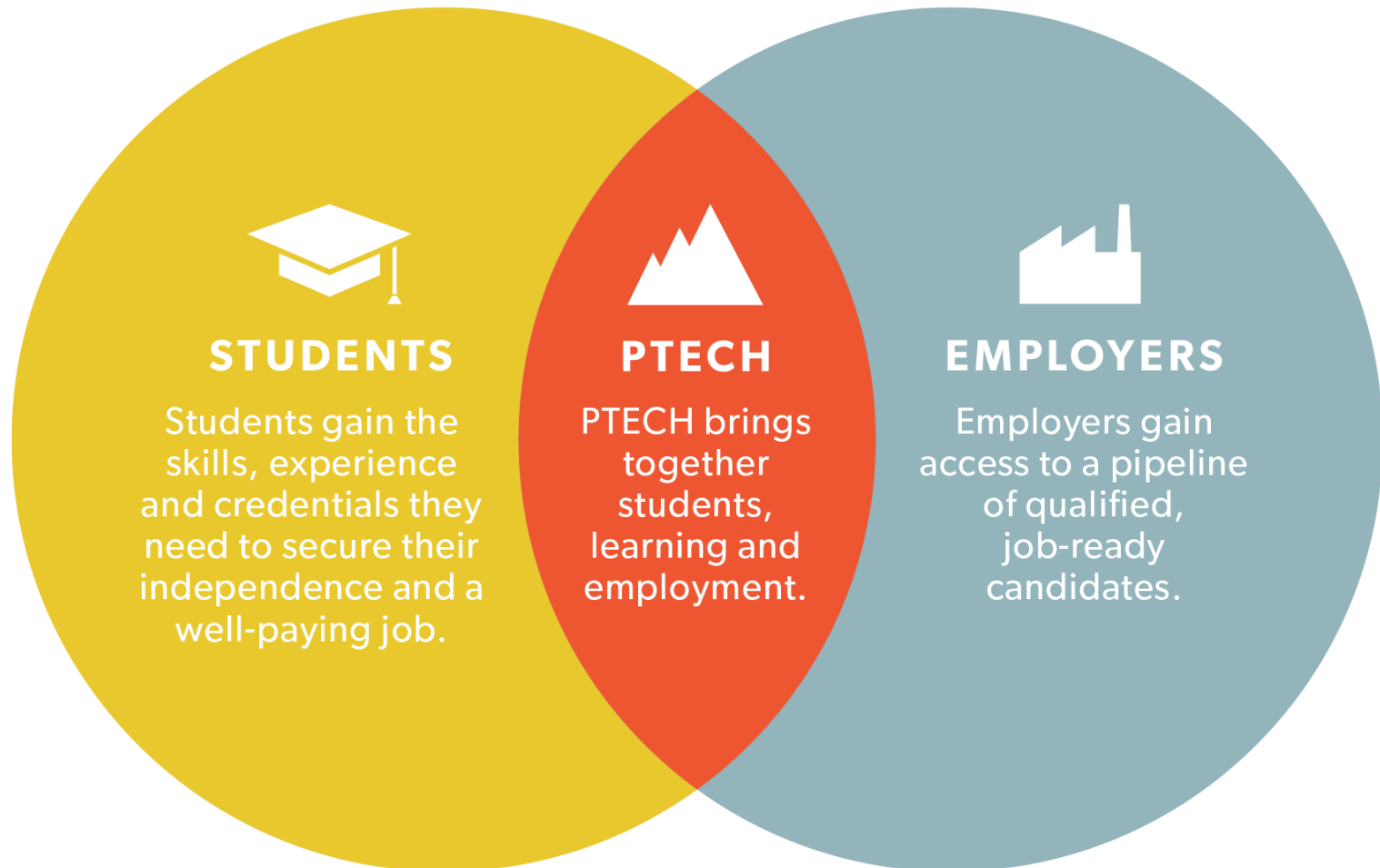
@idahoptech

Overview

- About PTECH
- The Original PTECH Model
- Lessons Learned / Key Pivots
- Current Model and “Customer”
- Industry Engagement
- PTECH Tools and Benefits to Students
- Early Results
- Career Map and “Mama’s Basement” Game
- Photos

About PTECH

Pathways to Early Career High School



The PTECH Promise

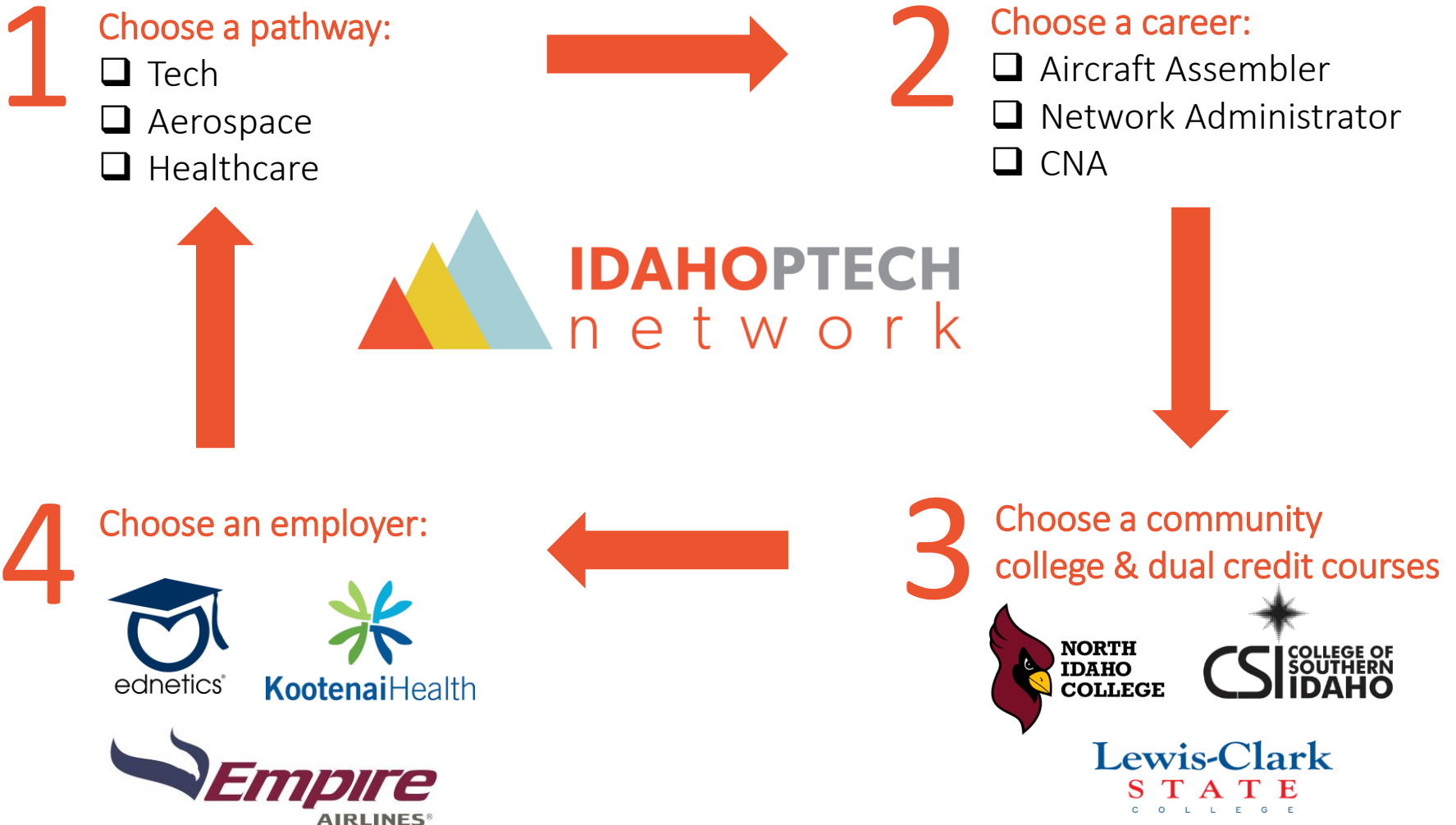


Career exploration + employability skills + training & credentials
= independence and a well-paying job



Idaho PTECH... *not Brooklyn PTECH*

PTECH's Original Model



Click here to watch [Jimmy's Story](#)



Lessons Learned / Key Pivots



Current Model

1 Industry Determines Workforce Need



2 Students Explore Interests and Career Options



3 Students Build a Career Plan and Self Select a Pathway of Interest



4 Students are Connected to Job Opportunities Based on Industry Need



IDAHOPTech
network

Our “Customer”

- Idaho high school students
- No plan for after high school and/or interested in career exploration
- Limited school resources for career planning



The Student Journey

1. Career Mapping

*Self assessments,
Join PTECH online
community, explore
options and
interests, test drive a
PTECH Coach*

2. Experiential Learning

*Field trips,
employer tours,
school visits,
employability skills
building*

3. Build Career Plan

*Identify careers of
interest and
skills/education
needed to get there*

4. Apply for available PTECH training and job opportunities

*If career plan aligns
with industry need,
apply for PTECH
support; work with
PTECH Coach to
follow career plan*

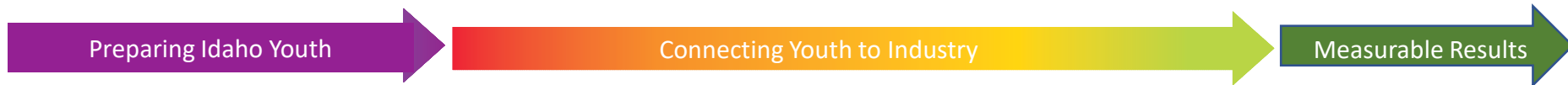
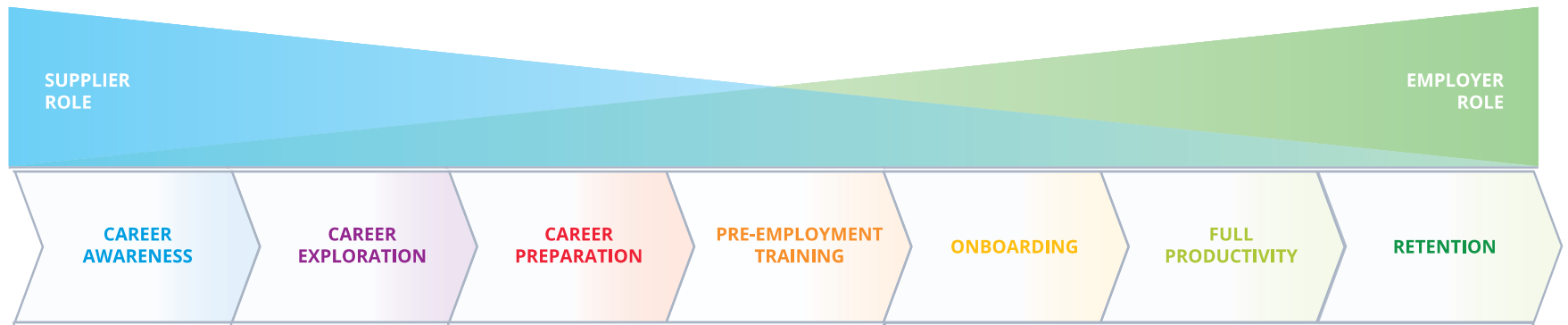
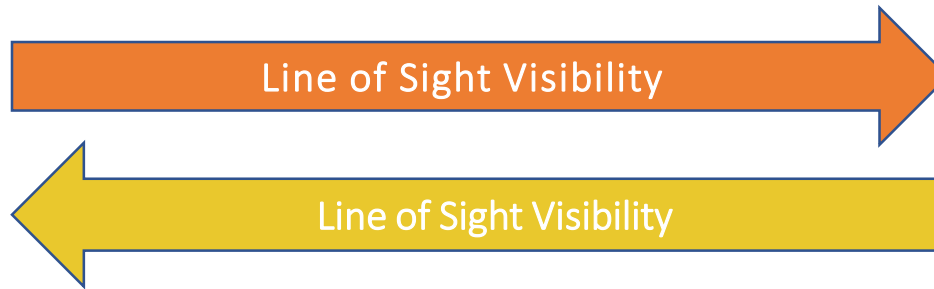


Industry Engagement

PTECH: Suppliers of Job Ready Youth

JOB READY
YOUTH

INDUSTRY



PTECH Tools



- Virtual (remote) Coach
- Career Exploration and Planning Guidance
- Experiential Learning Opps
- Employability Skills Building
- Specialized Training Opps
- Access to Employers

PTECH Remote Coaching



Benefits to Students

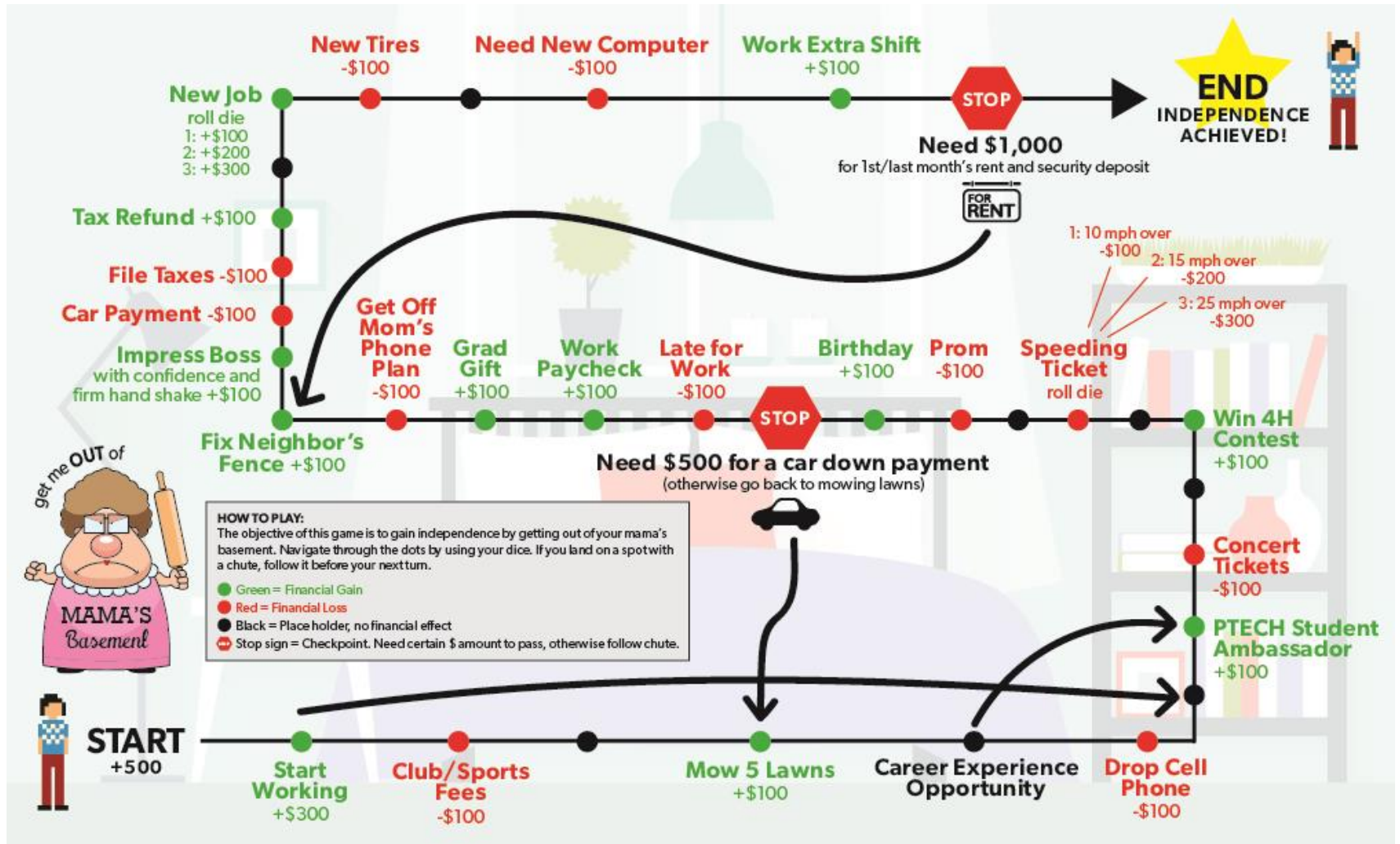
- Self discovery
- Leadership and teamwork experience
- Comprehensive career planning and licensed coaching
- Access to training and job opportunities
- Higher employability



Early Results

- 400+ students enrolled since 2014
 - 200 on a current pathway to a well-paying Idaho job
 - 40% attrition rate in Legacy Model
 - 70% of those students wanted a non PTECH supported pathway
- 1,812 total college credits earned while in HS
- 80% success rate (C or better)
- 12 students now in jobs or internships

Mama's Basement Game



#1

(START)

Exploration Mountain

Exploration Mountain:

This is the first stop on your career exploration journey. Check out the back of the map for instructions on completing each task, then check them off as you go. PTECH points will be calculated from your completed online forms.

Tasks:

- Who Am I?
- What Do I Like?
- My Options

DESTINATION COMPLETE

Preparation Park

#3

Preparation Park:

Now it is time to develop an action plan! Review where you are relative to high school graduation and identify the steps needed to complete the training required for your career goal. Then, create a realistic plan to help you achieve your goals.

Tasks:

- High School Credit Evaluation
- Required Career Education
- Am I Ready?
- Study Tips

DESTINATION COMPLETE

#2: PONDERING PIT STOP

How do I fit into the workplace?

CHECKPOINT COMPLETE

#1: DAYDREAM OASIS

What will my life be like?

CHECKPOINT COMPLETE

#2

Career City:

Now that you've been to Exploration Mountain, it's time to learn more about the careers you might want to pursue. Follow the instructions on the back of the map, and then check off the tasks as you complete them. PTECH points will be calculated from the completed online forms.

Tasks:

- Interesting Careers
- Job Openings
- Challenges vs. Rewards

DESTINATION COMPLETE

Career City

#4

Reality Rest Stop:

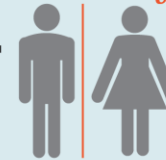
Congratulations on making it this far with your planning! Now it is time to stop and reflect on your plan. Will it help you reach your goals? Are your goals realistic? Do you need to make some changes to your plan? Follow the steps on the back of the map to evaluate your plan.

Tasks:

- Budgeting
- "Talk it Out" Activity
- More Budget Tips

DESTINATION COMPLETE

Reality Rest Stop



#4: BRAKE CHECK

Make adjustments

CHECKPOINT COMPLETE

#5

Diploma Tunnel:

Graduating from high school is a big step toward reaching your career goals. Congratulations!

Tasks:

- Graduate From High School

DESTINATION COMPLETE

Diploma Tunnel



#5: CHECK ENGINE

Mood assessment and goal setting

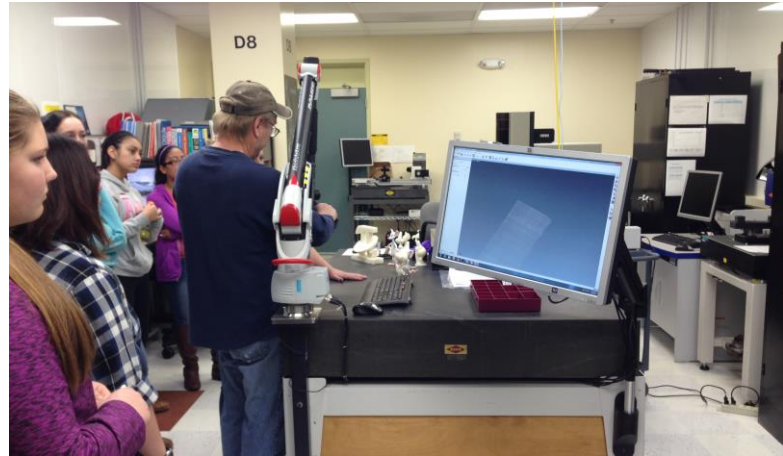
CHECKPOINT COMPLETE

JOB! <<<

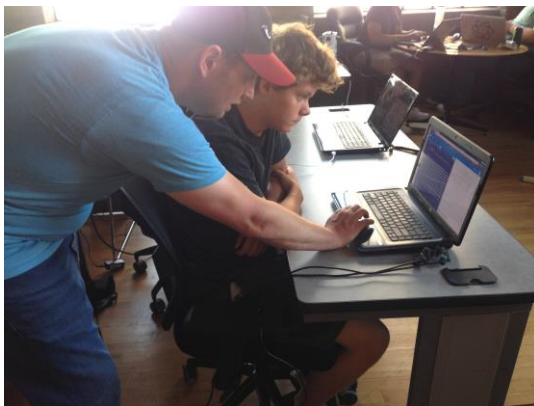
PTECH Student Conference



Experiential Learning



Specialized Training





Thank you + Q&A

More info:

www.IdahoPTECH.org



@IdahoPTECH